

SECTION 2

CLADDING



CLADDING

Araucaria Gold Kiln Dried Chamfer Boards

Hardwood Kiln Dried Chamfer Boards

Boral Cladding

Weatherboards

Weathertex - Natural Range

Weathertex - Weathergroove

Weathertex - Selflok

TQ TDS 3 - Treated Pine Cladding

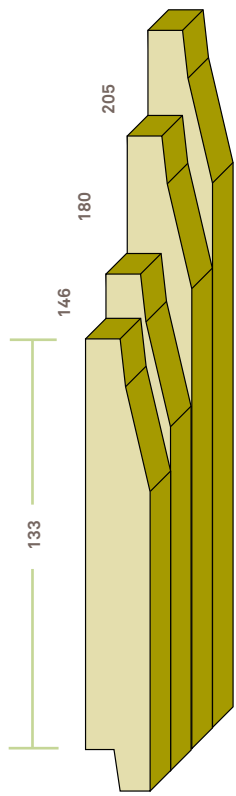
Traditional araucaria chamfer boards are both a functional and aesthetically beautiful part of your Queenslander. Available in a variety of cover widths, treated and primed for external durability and supplied in long, gun barrel straight finger jointed lengths.

DEPICTS 180 x 19
ARAUCARIA CHAMFER BOARD

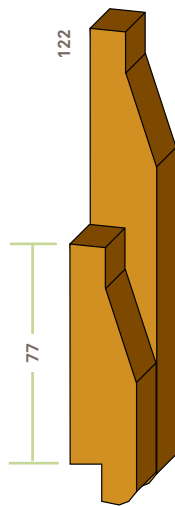


2.0 Cladding Profiles

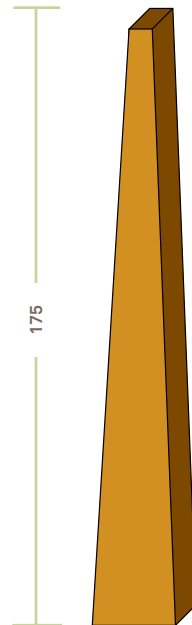
For correct handling, storage and fixing instructions for treated pine cladding, please refer Timber Queensland Technical Data Sheet No.3 on page 32.



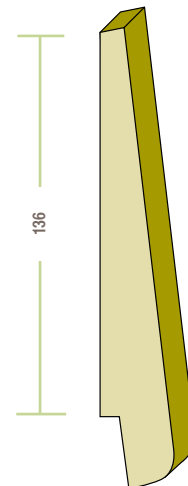
CHAMFER BOARD
KD FJ LOSP Primed 5.4's



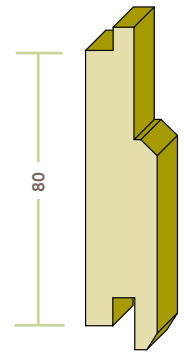
CHAMFER BOARD
KD Hardwood Random length



WEATHERBOARD
Unseasoned Hardwood,
KD Knotty Pine*



REBATED WEATHERBOARD
KD FJ LOSP Primed 5.4's



SHIPLAP
KD FJ LOSP Primed 5.4's

2.1 Araucaria Gold KD Chamfer Boards

SIZE	FJ CLEAR PRIMED BOARDS
Unit = LM	
77 x 19	
133 x 19	
133 x 19	
146 x 19	
180 x 19	
205 x 19	

2.2 Hardwood KD Chamfer Boards

SIZE	
Unit = LM	
77 x 19	
122 x 19	
STANDARD GRADE ONLY - Random length only.	

2.3 Weatherboards

SIZE	DESCRIPTION
175 x 25 Sawn	Kiln Dried Knotty LOSP Araucaria Random
170 x 22 Sawn	Kiln Dried Finger Jointed LOSP Pine Pre-Primed 5.4's
175 x 25 Sawn	Unseasoned Hardwood Random
136 x 21 Dressed and Rebated	Finger Joint LOSP Araucaria 5.4's
200 x 20 Sawn	Western Red Cedar Random
80 x 19 Dressed	Shiplap Finger Joint LOSP Araucaria 5.4's

Shaded area indicates stocked item. Non-shaded products may incur a set up charge. Please refer your Finlayson Representative.

NOTE: Chamfer sizes shown are actual cover widths of the boards. Weatherboards sizes shown are nominal sizes. All finger joint material 5.4m lengths. A minimum charge for priming may occur - please refer to your Finlayson representative.

NOTE: Knotty products are prone to knot bleed. Using an approved sealant of the knots will assist in delaying and reducing this bleed. This is the purchasers responsibility. * Primed N/A as knots require sealing prior

EXTERNAL TIMBER CLADDING


Araucaria
GOLD



The Araucaria GOLD range provides a water resistant, instant cure sealer and undercoat system, providing a long term building solution for your construction.

ABOUT THE PRODUCT

Araucaria GOLD is a dual coat priming system with a superior water resistant priming and undercoat system (Envirocure) that protects timber and reduces moisture uptake **by up to ten times more than conventional dual coat systems.**

Utilising the latest in UV coat systems, our Araucaria Gold range is fully envelope sealed and with the Envirocure system is by far the best pre-primed timber product on the market today. Incorporating Australian clear plantation grown Araucaria timber, finger jointed with an external, structural glue to gun barrel straight 5.4m long lengths.

It is then precision machined to both traditional and contemporary profiles, LOSP Treated to a hazard level H3 for above ground protection from rot, fungal decay and termites. Then the Araucaria GOLD dual coating system is applied, ready for the final coat painting system on site!

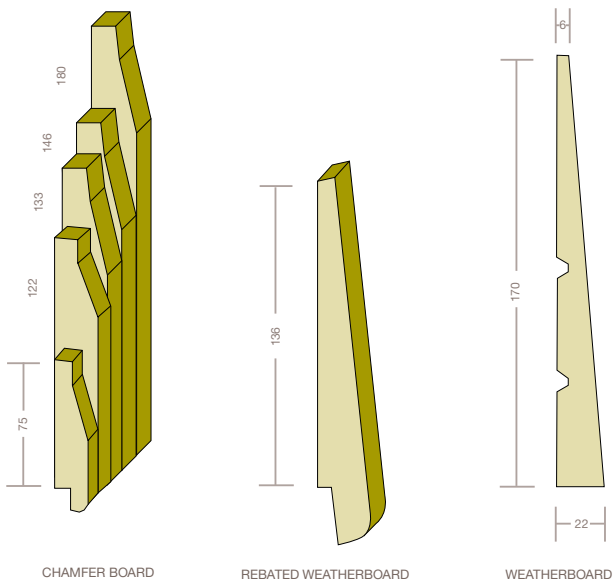
ABOUT THE COATING

- Dual coat system.
- First coat applied is a UV coating, completely sealing the timber.
- Second Coat is an acrylic coat specially formulated to bind to the UV coating. This system delivers a better seal ensuring less timber movement caused by moisture loss/uptake.
- Manufactured from sustainable, Australian plantation timber.
- Treated against rot, fungal and termite attack with the latest in H3 LOSP preservation technology.
- Excellent water and scratch resistance.
- Hardwearing.
- Environmentally friendly.



PROFILES

Araucaria GOLD range of profiles and sizes.



ARAUCARIA GOLD SIZE GUIDE

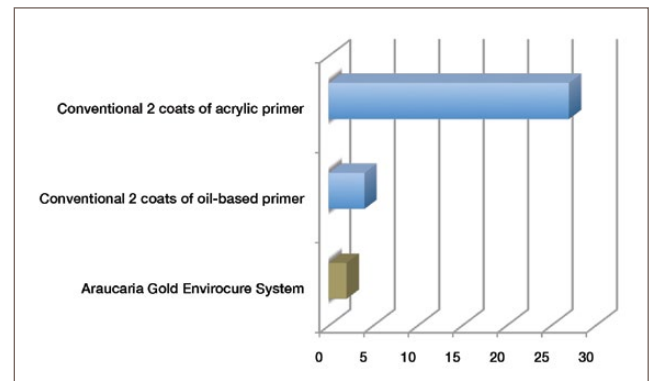
COVER SIZE	PROFILE	GRADE	LENGTH	PRIMING
77 x 19	Chamfer	H3 FJ Clear	5.4m	Envirocure
122 x 19	Chamfer	H3 FJ Clear	5.4m	Envirocure
133 x 19	Chamfer	H3 FJ Clear	5.4m	Envirocure
146 x 19	Chamfer	H3 FJ Clear	5.4m	Envirocure
180 x 19	Chamfer	H3 FJ Clear	5.4m	Envirocure
170 x 22 x 6	Weatherboard	H3 FJ Clear	5.4m	Envirocure
136 x 21	Rebated Weatherboard	H3 FJ Clear	5.4m	Envirocure

Note: Chamfer sizes shown are actual cover widths of the boards. Weather boards sizes shown are nominal sizes. All finger joint material 5.4m lengths.



COMPARITIVE WATER UPTAKE of PRE-PRIME COATING SYSTEMS

Expressed as (grams/ 100 inch² of exposed timber)



PRODUCT HANDLING AND INSTALLATION

Please refer to Timber Queensland Technical data Sheet 3 Treated Pine Cladding for the correct storage, handling and installation of this product. Refer www.superiorwood.com.au

Please note that not following these guidelines will void warranty.

PAINTING GUIDELINES

Prime all cuts, ends, mitres and bare timber with Superior Wood End Prime.

Araucaria GOLD is ready for final top coating on site and it is not necessary to fully sand or remove the primer from any profiles in the Araucaria GOLD range. Lighter colours are the recommended choice for final top coating. Painting dark colours will absorb heat and distort timber and may void warranty.

Superior Wood recommends Taubmans® premium external topcoats when painting the Araucaria GOLD range.



MAINTENANCE

The long term performance of external timber cladding is dependent on many factors including regular and effective maintenance, degree of exposure and quality of paint system.

A painted finish will require recoating after five to ten years and recoating and any further preparations are to be carried out in accordance with the finish manufacturer's specifications. Before recoating, the cladding should be cleaned and the joints resealed where required.

For the complete Technical Data Sheet please refer to Timber Queensland Technical Data Sheet No.3 Treated Pine Cladding.

Refer www.superiorwood.com.au

BORAL TIMBER
Build something great™

Boral Cladding



New range of Boral Hardwood Cladding and Lining Board available in a variety of Australian species and profiles.

Available Profiles Rusticated, Shiplap, Shadow and V-Joint Lining Board.

Available species Blackbutt, Spotted Gum, Ironbark & Tallowwood.

Manufactured in Australia for Australian conditions.





weathertex

a better choice, naturally

CLADDING | PANELS | WEATHERBOARDS



Selflok Ecogroove 150 Smooth



Weathergroove 75 Smooth



Selflok Ecogroove 150 Natural

WeatherTex is a family owned Australian manufacturer of natural Australian hardwood weatherboards and architectural panels operating for over 50 years. Available in primed and natural with many styles to choose from and loved by Builders, Architects, Specifiers and DIYers Australia wide. The only product of its kind in the world containing no artificial glues, resins or binders.

100% natural, extremely durable, easy to install and with a 25 year warranty not to rot, split or crack.

FREE ONLINE samples, Takeoff service and virtual tool.

Simply go to weathertex.com.au for a more sustainable cladding solution.

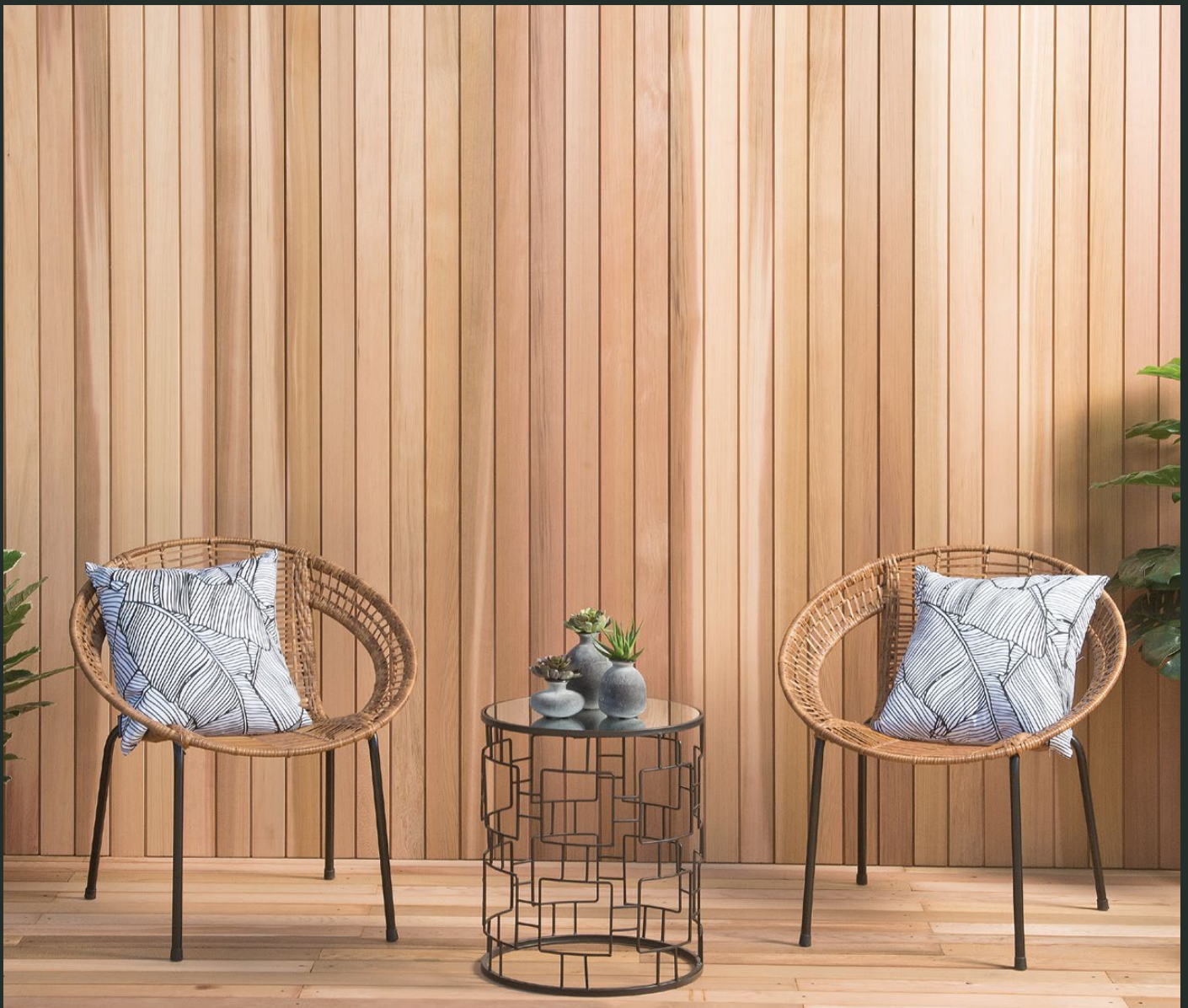
WeatherTex... a better choice, *naturally!*



Cladding you can trust, *naturally.*

weathertex.com.au





Western Red Cedar claddings are renowned for their warmth and longevity, perfect for introducing natural aesthetics to any contemporary building.

Tilling's Western Red Cedar claddings are manufactured from PEFC Certified timber. Prized for its stability and durability, Western Red Cedar will withstand the challenges of our Australian climate.

Natural colour tones range from light straw through buff and warm red to the occasional deep brown. If left unfinished, all Western Red Cedar claddings will age gracefully to a silver finish without losing their weather resistant attributes.

Product samples are available upon request

Ask your Finlaysons representative about Tilling's Western Red Cedar claddings.

Western Red Cedar 18mm CLADDING

Manufactured from PEFC certified timber. Sold in bundles of 4 boards.



Profile	Description	Product Code	Dimensions (mm)	Finish	Grade
	V-Joint Cladding, 84 x 18mm	CV4C	84 x 18	Dressed	Premium
	V-Joint Cladding, 133 x 18mm	CV6C	133 x 18	Dressed	Premium
	SlimLine Secret Nail Cladding, 78 x 18mm (with 5mm channel)	CSN14C	78 x 18	Dressed	Premium
	SlimLine Secret Nail Cladding, 78 x 18mm (with 5mm channel). Fine Sawn finish	CSN1S4C	78 x 17	Fine Sawn	Premium
	SlimLine Secret Nail Cladding, 78 x 18mm (with 5mm channel). Rustic Sawn finish	CSN1R4C	78 x 18	Rustic Sawn	Mill Run
	SlimLine Cladding, 133 x 17mm (with 5mm channel).	C16C	133 x 18	Dressed	Premium
	SlimLine Cladding, 133 x 17mm (with 5mm channel). Fine Sawn finish	C1S6C	133 x 17	Fine Sawn	Premium
	ShipLap Cladding, 84 x 18mm	C24C	84 x 18	Dressed	Premium
	ShipLap Cladding, 133 x 18mm	C26C	133 x 18	Dressed	Premium

Western Red Cedar 14mm CLADDING

Manufactured from PEFC certified timber. Sold in bundles of 6 boards.



Profile	Description	Product Code	Dimensions (mm)	Finish	Grade
	V-Joint Cladding, 133 x 14mm	CPV6C	133 x 14	Dressed	Premium
	ShipLap Cladding, 133 x 14mm	CP26C	133 x 14	Dressed	Premium

Western Red Cedar HORIZON 26mm CLADDING/LINING

Manufactured from PEFC certified timber. Sold in bundles of 2 boards.

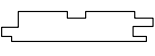
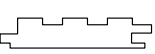


Profile	Description	Product Code	Dimensions (mm)	Finish	Grade
	HORIZON Double Step castellation profile, 81 x 26mm	CAS2926C	81 x 26	Dressed	Mill Run
	HORIZON Triple Step castellation profile, 81 x 26mm	CAS1526C	81 x 26	Dressed	Mill Run

Western Red Cedar HORIZON 18mm CLADDING/LINING

Manufactured from PEFC certified timber. Sold in bundles of 4 boards.



Profile	Description	Product Code	Dimensions (mm)	Finish	Grade
	HORIZON Double Step castellation profile, 81 x 18mm	CAS2918C	81 x 18	Dressed	Mill Run
	HORIZON Triple Step castellation profile, 81 x 18mm	CAS1518C	81 x 8	Dressed	Mill Run

General Conditions

50% discount for 0.6m lengths - subject to availability

Cedar Long Lengths (4.5m and above) attract a 15% surcharge - subject to availability

Set Length Surcharge for orders over 100LM - add 10% to price.

Orders over 200LM will be supplied as 10% shorter lengths (0.9 - 1.5m).

Broken bundle quantities supplied as 3.0m lengths - subject to availability.

Western Red Cedar RUSTIC PRODUCTS

Manufactured from PEFC certified timber.



Description	Product Code	Dimensions (mm)	Finish	Grade
Kiln Dried Weatherboard, Sawn face, dressed back & edges. Random length specification only.	CBKS8KD	164 cov.	Sawn	Tight Knot
32 x 32mm Internal Stop, Sawn Finish	B3232SC	32 x 32	Sawn	Mill Run
57 x 32mm External Stop, Sawn Finish	B5732SC	57 x 32	Sawn	Mill Run
No 1 Blue label Premium clear grade, fully quarter sawn. Recommended for roofing application. 450mm (nominal) length, 11mm thick at butt end, width varies. 2.33m ² cover at 140mm exposure	BLSHINGLES	2.33m ²	Sawn	Blue Label
No 2 Red label general purpose grade with limited sap wood. Contains both quarter and back sawn. 450mm (nominal) length, 11mm thick at butt end, width varies. 3.72m ² cover at 215mm exposure.	RLSHINGLES	3.72m ²	Sawn	Red Label
No 1 Shakes- Hand-split and re-sawn. 600mm (nominal) length, 12mm to 19mm thick at butt end, width varies. 1.33m ² cover at 190mm exposure. Minimum roof pitch- 20°	SHAKES	1.33m ²	Hand-split & re-sawn	-
Shingle Ridging. 400mm (nominal) length, 80mm ridge depth. Provides 5080mm run of ridging at 140mm exposure	SHINGRIDGE	5080mm run	Sawn	-

HURFORD'S

Shou Sugi Ban

REFINED ARCHITECTURAL CLADDING

烧杉板

A complete system.

Hurford's Shou Sugi Ban Refined Architectural Cladding combines the ancient Japanese craft of fire treatment with a precision milled, architectonic cladding profile. It is a complete solution for any exterior wall, offering not just the cladding but a selection of customised trims to ensure a streamline execution and watertight result.

The timber species selected to manufacture Hurford's Shou Sugi Ban is ethically sourced and processed by Hurford's locally owned and operated facility in Queensland, Australia. Favourably sort after for its natural qualities and unique appearance, *Callitris glaucophylla* is highly durable and a naturally termite resistant species. Applying the fire treatment forces an additional barrier of protection against insect attack and decay, furthermore increasing the species overall durability.

Hurford's uses a modernised Shou Sugi Ban technique, the process evenly chars the face of the board before it is cooled and finished to Hurford's 'Straight Charred' effect.

Hurford's Shou Sugi Ban Refined Architectural Cladding, is an aesthetically pleasing yet durable façade option.

Specifications

CLADDING

Profile: Coulee

Width: 88mm (70mm cover) & 138mm (120mm cover)

Thickness: 21mm

Length: Random

Moisture Content: AS1080.1

Fixing: Stainless Steel 304 Black Zinc Coated Screw 5.5 x 50mm.

Available to purchase from Hurford Wholesale Pty Ltd

Species: *Callitris*

Joining: End-matched, micro bevel

Finish: Straight Charred & Pre-Oiled

BAL: Standard Production BAL-LOW

*Australian Hardwoods with BAL-29 rating available upon request.

TRIMS

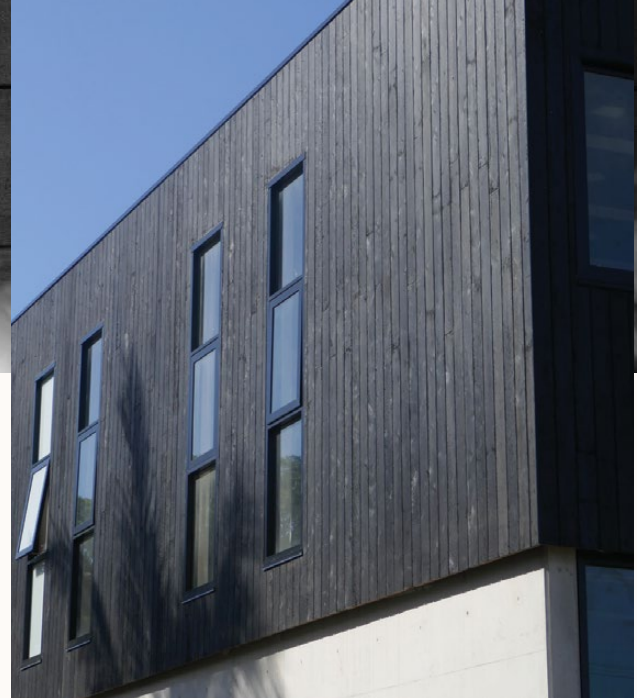
External Corner: Powdercoated Aluminium

Internal Corner: Powdercoated Aluminium

End Stop: Powdercoated Aluminium

Straight Charred Finish

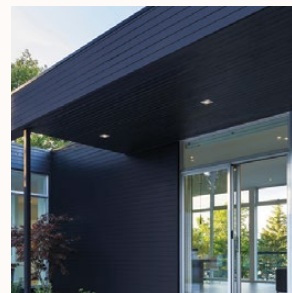
Hurford's 'Straight Charred' process removes the heavily charred top layer to reveal a subtle textured surface that accentuates the blackened grain and features of the timber.



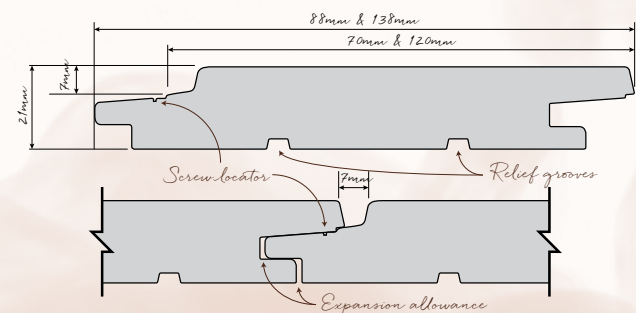
End Matching



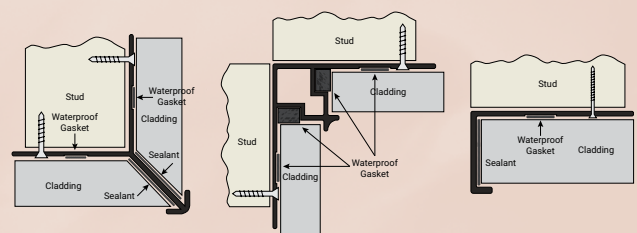
Moisture Barrier System



Profile Design Coulee



Trim designs external corner, internal corner, end stop





WOOD ELEMENTS
REFINED ARCHITECTURAL HARDWOOD CLADDING

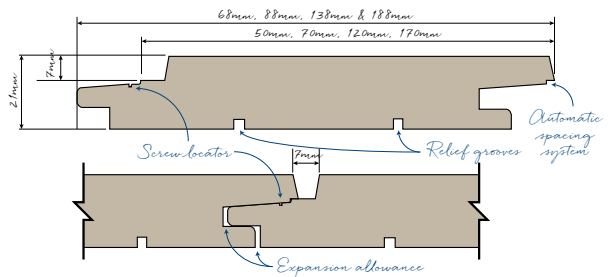


WOOD ELEMENTS brings natural style to any exterior surface, whether as an individual feature or an entire façade.

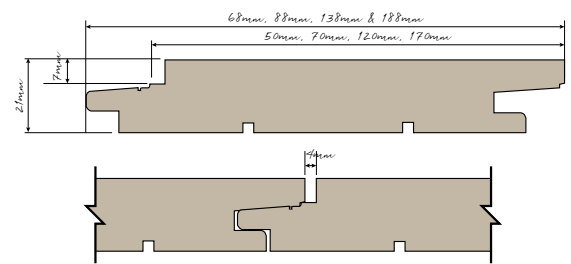
Only the highest quality and naturally durable species are used in the external range of WOOD ELEMENTS. These included the Australian classics like Spotted Gum, Blackbutt & Ironbark that are sought after around the world for their strength, durability and style.

Architectural Specification

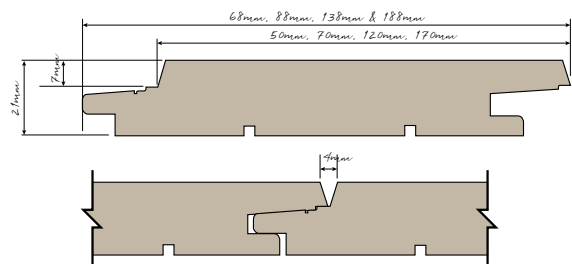
PRODUCT NAME	WOOD ELEMENTS CLADDING
Profile Name:	Coulee, Flume & Ravine
Cover Size:	50mm, 70mm, 120mm or 170mm X 21mm
Timber:	Blackbutt, Spotted Gum, Ironbark & American White Oak (internal use only)
Grade:	Prestige
Fixing:	WURTH ASSY@PLUS A2 Decking Construction Screw 0166115550
Joining:	End Matched with fitted moisture proof gasket
Trim – External Corner:	1. Aluminium with fitted moisture proof gasket. 2. Wood with moisture proof gasket.
Trim – Internal Corner:	1. Aluminium with fitted moisture proof gasket. 2. Wood with moisture proof gasket.
Trim – End Stop:	1. Aluminium with fitted moisture proof gasket. 2. Wood with fitted moisture proof gasket.
Pre Oiling:	Feast Watson Traditional Timber Oil (optional factory finish)
Finish:	2-3 coats of Feast Watson Traditional Timber Oil following installation



Coulee



Flume



Ravine (internal use)

www.hurfordwholesale.com.au



Treated Pine provides a long lasting external cladding for buildings but attention must be paid to the correct storage, handling, fixing, finishing and maintenance of the product.

The most common types of treatment are waterborne (CCA, ACQ and copper azole) and LOSP (Light Organic Solvent Preservative). These preservatives protect the sapwood against decay and insect attack. Preservatives do not prevent weathering (i.e. where timber is exposed to sun and rain it turns silver/grey and may also become 'black' with surface mould with its surface becoming rough and possibly developing fine cracks).

Some treatments also contain water repellents. Where a water repellent has not been incorporated in the treatment process, it is recommended a water repellent preservative be applied on-site, particularly cut ends. The application of a water repellent preservative reduces the rate of moisture loss or uptake thereby reducing initial movement, distortion and surface checking.

PRODUCT SPECIFICATION

Preservative treated pine cladding should comply with Australian Standard AS 4785 or applicable industry standards.

Profile

A range of weatherboard, shiplap and chamferboard profile are currently available. Critical dimensions to ensure satisfactory longterm performance are detailed in Figure 1.

Moisture Content

At the time of fixing the moisture content of treated pine cladding should not exceed 15%. This is to avoid problems caused by timber movement and shrinkage, and ensure satisfactory application of paints and stains.

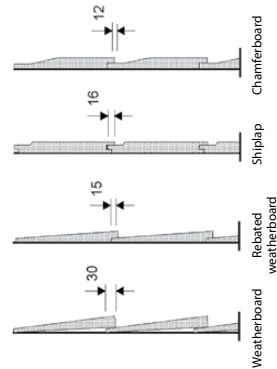


Figure 1 - Cladding Profiles

INSTALLATION

Sarking

Unless protected by a verandah roof, a reflective, waterproof, vapour permeable or breather type sarking should be installed behind all timber cladding to prevent penetration of water under severe rain and wind conditions. Sarking should be fixed on the outside of studs using disc type nails at 600 mm centres. Horizontal laps must not be less than 50 mm and vertical laps must be on studs.

NOTE:

The use of non-vapour permeable aluminium foil or plastic sarking directly behind timber cladding is not recommended as trapped vapour may cause cupping and distortion.

Joint Sealing

When a clear or stain finish has been chosen in conjunction with treated cladding, all freshly cut surfaces will require the application of a water repellent preservative. On all cladding to be painted, freshly cut ends are to be primed with the colour matched primer. All joints irrespective of the finish or type of treatment process used are to be sealed, including stopped ends, with a compatible mastic or silicone sealant. The sealant is to be placed onto the boards before fixing them into position.

Fixing

Where nailing guns are used, care should be taken to ensure that excess pressure does not distort the boards and that nails are not countersunk (heavy nailing distorts the wood and may cause splitting during weather changes). Wherever possible, cladding should be fastened so that the boards are free to shrink and swell individually. Cladding shall be fixed at not more than 650 mm centres measured along the board.

(i) Type of Nails

Suitable nails are:

- Hot dipped galvanised (not electro galvanised)
- Silicon Bronze
- Monel
- Stainless Steel

NOTE:

Flathead hot dipped galvanised nails are to be used with nailing guns.

(ii) For Weatherboards

One nail per board at each stud.

Drive nails as close as possible to the butt of the boards, but nails must not penetrate the tip or thinner edge of the board beneath, i.e. 30 mm lap, nail 35 mm from the butt (refer Figure 2).

Nail Size:

- For hardwood and cypress frames - 65 mm x 3.05 mm flat head nails.
- For softwood frames - 65 mm x 3.05 mm flat head (ring shank) nails.

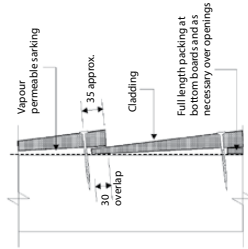


Figure 2 - Weatherboards

(iii) For Channel, Ship-Lap or Chamferboard Cladding

Two nails per board at each stud or nogging.

Nail Size:

- For hardwood and cypress frames - 60 mm x 2.8 mm flat head nails.
- For softwood frames - 60 mm x 3.05 mm flat head (ring shank) nails.

Nail to be driven approximately 25 mm from shoulder of boards (refer Figure 3).

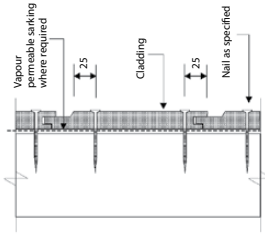


Figure 3 - Shiplap or Chamferboard

(iv) Diagonal Cladding of any Profile

Where cladding is fixed diagonally, the direction of fixing should not cause water to drain into internal corners or stops. Make adequate provision to discharge water clear of the building. With tongue and groove profiles, the tongue edge should always be up.

Flashing

Flash all openings in accordance with good building practice to prevent moisture penetration to the frame and the interior of the building.